

Animals + Agspand FEEDCHAR® + DUNG BEETLES

add Carbon ↓ to Soils

Why Use FEEDCHAR® with Animals?

ANIMALS MAY FALL ILL from eating seasonally potent plant toxins and rich feeds. Small amounts of FEEDCHAR® certified Charcoal + Minerals may assist animals. FEEDCHAR® uses plant charcoal that has a large amount of Stabilised Carbon. Sequestering (holding) Stabilised Carbon in the form of charcoal in soils, may help to reduce excess Carbon in the form of Greenhouse Gas in the atmosphere.



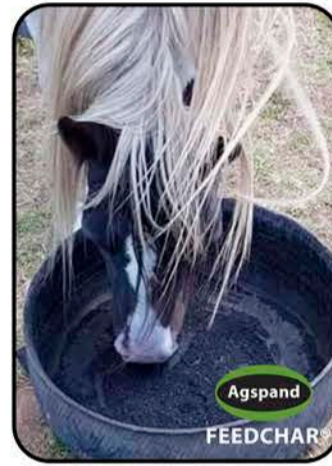
LEFT: Wet seasons may increase pasture-mould mycotoxins, plus excess weeds, RIGHT: Both can cause gut imbalances.



ABOVE: Animals scouring on rich forage may lose nutrition and body weight, causing animal stress, sometimes death.



Animals ♥ FEEDCHAR® Health Support



ANIMALS FREELY EAT FEEDCHAR®, or it can be mixed with all feeds or other loose licks, to support their healthy digestion, condition, and calm behaviour.

The stabilised carbon (charcoal) in the FEEDCHAR largely remains in the animals' excreted manures, which is all then buried into soils by Dung Beetles.



Dung Beetles ♥ FEEDCHAR®



ANIMAL MANURE with Agspand's FEEDCHAR is very attractive to Dung Beetles, because the manure is carbon nutrient-rich food for their young.

The beetles quickly bury the manure, which contains Soluble Carbon as well as the Stable Carbon in FEEDCHAR, up to 50 cm deep into the soil.

Little manure is left on the pasture surfaces, reducing fly populations.

LEFT: Geotrupes spiniger, a dung beetle active in southern Australian states, including Tasmania.



FIRST DAY
FEEDCHAR® Horse Manure



OVERNIGHT
Dung Beetles swarm manure!



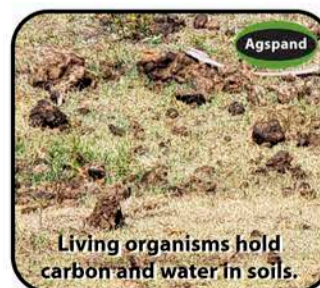
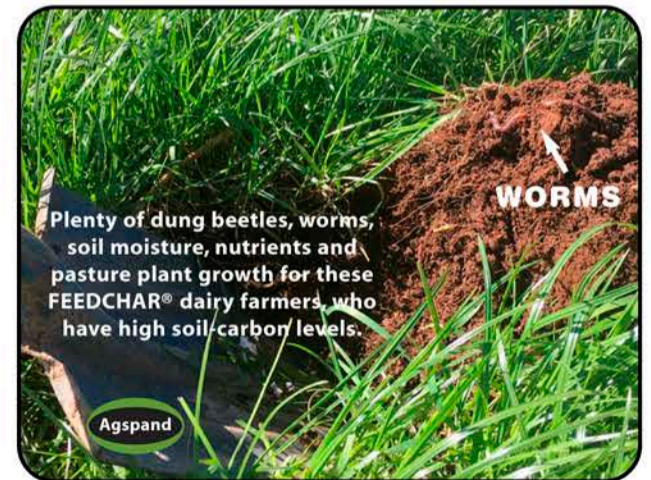
SECOND DAY
Beetles have buried manure!

FEEDCHAR® ↓ Carbon in Soils

DUNG BEETLES BURYING CARBON-rich manures improves soil nutrition and also its waterholding capacity for worms and plant growth.

Sequestering (holding) carbon in soils may reduce excess Greenhouse Gas carbon in the atmosphere.

These simple, natural and organic systems support carbon farming and diverse, regenerative farming for sustainable healthy, profitable agriculture.



FEEDCHAR®
www.agspand.com.au

Supporting
Animal & Soil Health